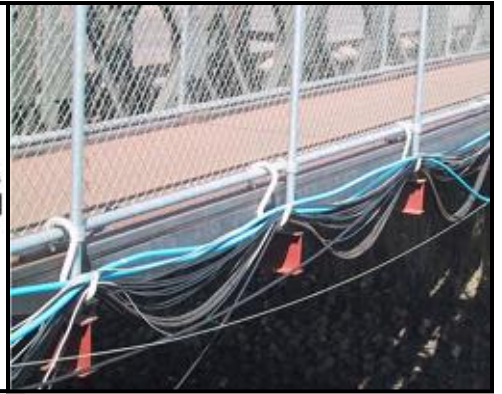


**CABLESAFE® SAFETY HOOK (CS)****EASY, ONE-HANDED USAGE**

- Used in place of ropes, lashing, or zip ties
- One-hand operation
- Simply position the hook, and then lift the work lines into place
- Easily secure loads by using a zip tie through holes in each end of the hook

**SAFER WORK ENVIRONMENT**

- Extremely easy to suspend cables, electrical wires, hoses, and other work lines
- Reduce tripping hazards by getting things up off the walking surface
- Great in marine and offshore applications

**TOUGH, STRONG CONSTRUCTION**

- Available in four sizes: 6", 9", 12", and 15"
- As the size increases, so does the diameter and load capacity
- Note: Not made for lifting
- Corrosion resistant

**EXCELLENT TEMPERATURE RESISTANCE**

- Molded from glass reinforced polyester
- Withstands temperatures from -4° F (-20° C) up to 392° F (200° C)
- Parts are colored throughout with high-visibility safety yellow

**BENEFITS**

- Safe & effective
- Maintenance free
- Long service life
- Proven design

**PROTECTION FOR YEARS AND YEARS**

- Does not damage paint
- Will not cut or puncture your cables
- Can be used over and over again



# INTREPID INDUSTRIES INC.

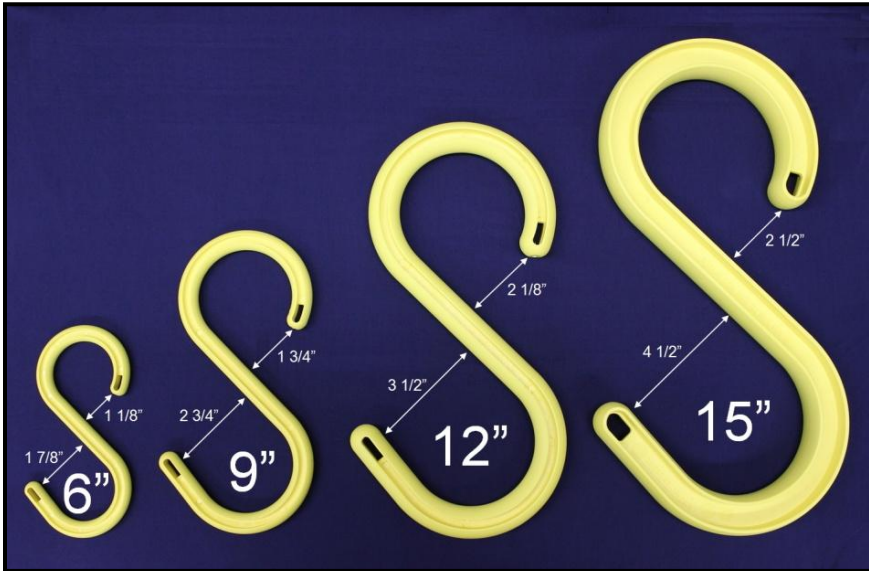
2305 S. Battleground Road  
La Porte, TX 77571-9475

T: 281.479.8301  
F: 281.479.3453

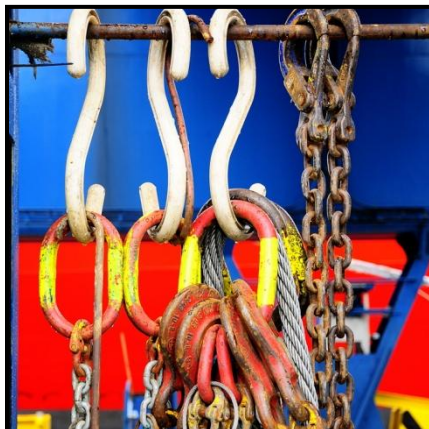
sales@intrepidindustries.com  
www.intrepidindustries.com

## CS DIMENSIONS & LOAD RATINGS

Available in Four Sizes With Two Different Opening Sizes



Hook Size	Load Rating	Small Opening	Large Opening
<b>CS-6</b>	55 lbs (25 kg)	1 1/8" (29 mm)	1 7/8" (48 mm)
<b>CS-9</b>	77 lbs (35 kg)	1 3/4" (44 mm)	2 3/4" (70 mm)
<b>CS-12</b>	220 lbs (100 kg)	2 1/8" (54 mm)	3 1/2" (89 mm)
<b>CS-15</b>	340 lbs (155 kg)	2 1/2" (64 mm)	4 1/2" (114 mm)





# INTREPID INDUSTRIES INC.

2305 S. Battleground Road  
La Porte, TX 77571-9475

T: 281.479.8301  
F: 281.479.3453

sales@intrepidindustries.com  
www.intrepidindustries.com

## CS INSTALLATION

### Strong and Can Be Easily Secured With Zip Ties



### Hooks Quickly and Easily Snap Over 1 1/2" Pipe Rails For Use In Operating Plants or In Entertainment Venues

These hooks (especially the CS-9 and CS-6 hooks) can be used to snap onto standard 1 1/2" pipe rails to quickly and easily hold cables and lines. They will not ding, pinch, cut, or damage wires, and lines.

Available in bright **yellow** for visibility and safety **or** in inconspicuous **black** (CS-9 only).



Safety Hooks snap into place over Pipe Rails

1.75" Hook Opening

1.9" O.D. Pipe Rail



Locate hook in desired position. Hook will flex, and then snap into place over the pipe rail.



Once in position, hook will hold cables, wires, and lines neatly. They are very easy to remove.



# INTREPID INDUSTRIES INC.

2305 S. Battleground Road  
La Porte, TX 77571-9475

T: 281.479.8301  
F: 281.479.3453

sales@intrepidindustries.com  
www.intrepidindustries.com

## CS HANDI-KLIP® SYSTEM

### CableSafe® Safety Hook & Handi-Klip® System

During commercial construction or in existing buildings, cords/cables can be elevated to minimize trip hazards while avoiding dings, pinches, cuts, mars or damage to dry wall and ceiling grid. The Handi-Klip® has a breakaway load of 50 pounds (All CableSafe® Safety Hooks have a 55 pound load rating and up). Made of all plastic construction and available in bright yellow color for visibility and safety.



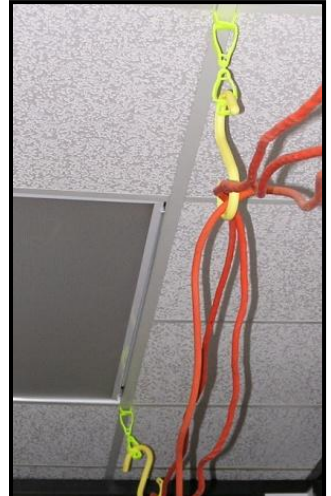
Squeeze and attach large end of Handi-Klip® to main line of ceiling T-grid.



Insert CableSafe® Safety Hook into smaller end of Handi-Klip®. Orient along cable run.



Place cords and cables into end of hook. Use hole in hook to secure with a zip tie, if needed.



Repeat for full run.

